


**Pixsys**<sup>®</sup>  
ELECTRONICS

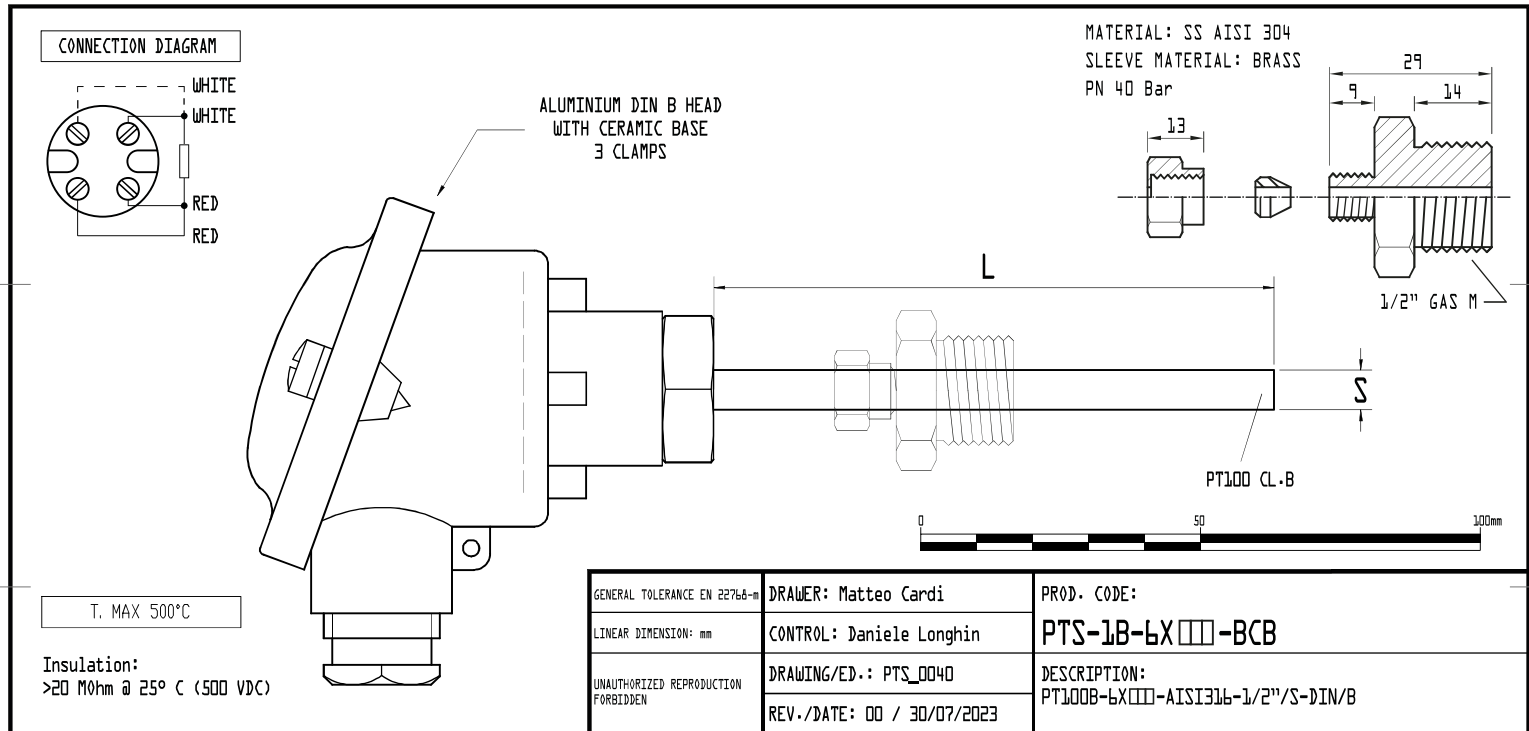
**CODE:** **PTS-1B-6X□□-BCB**  
**DESCRIPTION:** Temperature Sensor PT100 Class B, AISI316 sheath  
 Ø 6 mm, 1/2" male GAS sliding, DIN B

**OPERATING TEMPERATURE:** -100°C + 500°C  
**HEAD MATERIAL:** Aluminium  
**IMMERSED MATERIAL:** Steel AISI 316L (food grade)  
**FITTING MATERIAL:** N.A.  
**SENSOR INSULATION:** MgO Magnesium Oxide >20Mohm @ 25°C (500VDC)  
**TIP TAPERING:** NO  
**CERTIFICATION:** NO

□□ = SHEATH LENGTH (L): 100 = 100 mm    500 = 500 mm  
 200 = 200 mm  
 300 = 300 mm  
 400 = 400 mm

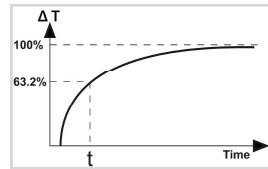
**SHEATH EXT. Ø (S):** 6 mm  
**SHEATH INT. Ø:** 5 mm  
**RTD RESPONSE:** 6,5 sec

**COMPLIANCE** 



STANDARD DIN EN 60751

Temperature C°	Tolerance PT100 B Class (+/- C°)
-200	1.3
-100	0.8
0	0.3
100	0.8
200	1.3
300	1.8
400	2.3
500	2.8



RTD response time with steel tube AISI-316/304 MgO insulated, conforming to B.S. 1904/1984/CEI60751. 50mm immersion in water at a speed of 1m/sec. Calculated on 63.2 % of the thermal jump, depending on stem diameter and thickness.

**Pixsys srl**  
 Via Po, 16  
 30030 - Mellaredo di Pianiga  
 Venezia - Italia  
 Tel. +39 041 5190518  
 Fax +39 041 519002  
 Mail info@pixsys.net  
 www.pixsys.net



Document version: rel.01  
 Last update: 30/07/2023  
 Author: Matteo Cardi

Ordering Code:

PTS---

Sensor type	
1B	PT100 CLASS B
KA	PT1000 CLASS A
KB	PT1000 CLASS B
5A	PT500 CLASS A
PK	PTC 1000 OHM
P2	PTC 120 OHM
N1	NTC 10K (β3435K)
N2	NTC 10K (β3694K)
N3	NTC 2252 (β3976K)
TH	NI100
I2	NI120
TK	THERMOCOUPLE K
TJ	THERMOCOUPLE J
TS	THERMOCOUPLE S

Process connection	
Examples:	
0	NN
1	1/8" MALE GAS FIXED UNDERHEAD
2	1/4" MALE GAS FIXED UNDERHEAD
3	1/2" MALE GAS FIXED UNDERHEAD
4	1" MALE GAS FIXED UNDERHEAD
...	
6	1/8" MALE NPT GAS FIXED UNDERHEAD
7	1/4" MALE NPT GAS FIXED UNDERHEAD
8	1/2" MALE NPT GAS FIXED UNDERHEAD
9	1" MALE NPT GAS FIXED UNDERHEAD
...	
A	1/8" MALE GAS SLIDING
B	1/4" MALE GAS SLIDING
C	1/2" MALE GAS SLIDING
D	1" MALE GAS SLIDING

Head/Cable/Connector	
Examples:	
A	HEAD DIN A
B	HEAD DIN B
C	HEAD MINI DIN
T	HEAD DIN A ATEX
X	HEAD DIN B ATEX
Y	HEAD MINI DIN ATEX
M	CONNECTOR M12 4 PIN
P	CONNECTOR HOSE
...	
1	GSC SILICONE CABLE 2m
2	PVCC CABLE 2m
3	TTS CABLE 2m
4	SPECIAL CABLE 2m
5	GSC SILICONE CABLE 3m
6	PVCC CABLE 3m
7	TTS CABLE 3m
8	SPECIAL CABLE 3m
9	FREE
Z	CUSTOM

Sheath diameter and length (S x L)	
Examples:	
6X050	Ext. Ø 6 mm x 50 mm
6X100	Ext. Ø 6 mm x 100 mm
6X200	Ext. Ø 6 mm x 200 mm
6X400	Ext. Ø 6 mm x 400 mm
8X250	Ext. Ø 8 mm x 250 mm
4X050	Ext. Ø 4 mm x 50 mm
AX150	Ext. Ø 10 mm x 150 mm
6X1M0	Ext. Ø 6 mm x 1 m
8X1M5	Ext. Ø 8 mm x 1,5 m
...	

Sheath material	
A	STEEL AISI304 SHEATH
B	STEEL AISI316 SHEATH
C	STEEL AISI308 SHEATH
M	STEEL AISI304 SHEATH, MgO INSULATION
N	INCONELL600 SHEATH
K	SINGLE CERAMIC SHEATH
Y	DOUBLE CERAMIC SHEATH