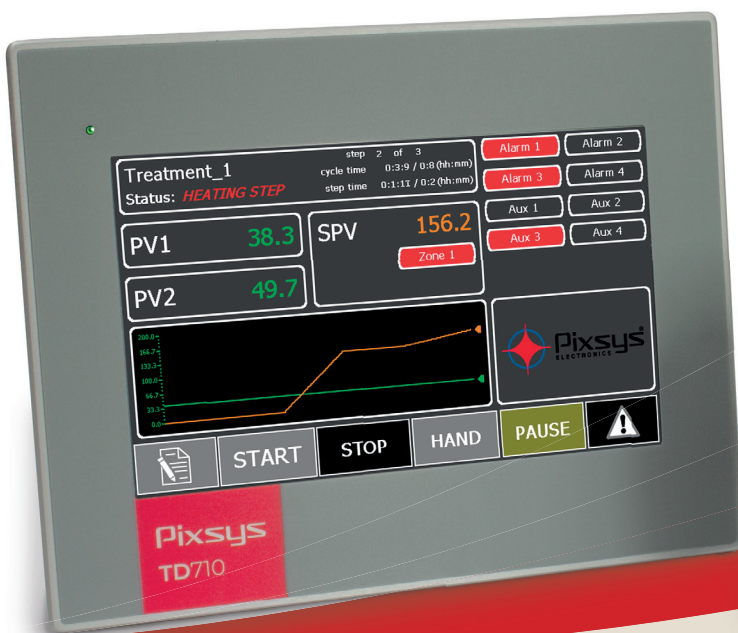


KTD

Multiloop cycles programming



Control system for electric / gas ovens

Up to 8 PID loops

99 programmable Cycles, 45 Steps / Each

Trends and datalogger (.csv format)

Remote control and Assistance via Pixsys Portal

Pixsys Srl

Via Po 16, I - 30030 Mellaredo di Pianiga VE
Ph. +39 041 519 0518 • Fax +39 041 519 0027

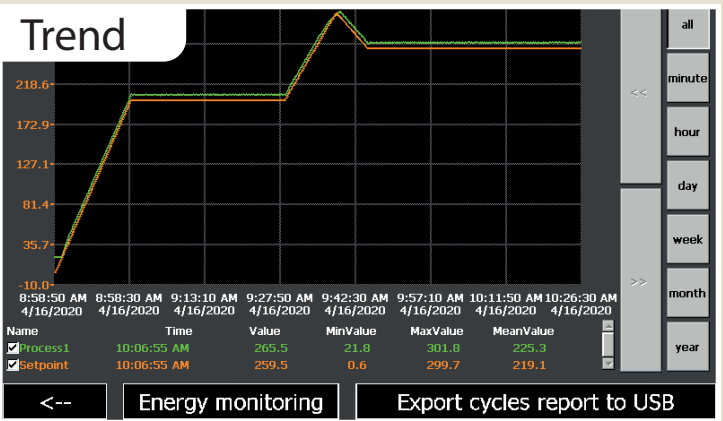
www.pixsys.net - sales@pixsys.net



Cycle Test 1

STEP	TIME	SPV	AUX1	AUX2	AUX3	AUX4
0						
NEW	1	5	100,0	✓	✗	✓
DEL	2	10	100,0	✗	✓	✗
STEP -	3	60	250,0	✓	✗	✓
STEP +	4	120	250,0	✗	✓	✗
	5	90	30,0	✗	✗	✗

Cycle setup



Alarm1 Alarm7 Alarm7 Alarm4

Alarm 1 Name: Alarm 1

Enable alarm: Yes

Type: Ab.uP.A

Source: Process 1

Valid: Always

Action: Nothing

Output scope: Output 1

Alarm Threshold: 0,0

Alarm Hysteresis: 0,0

Alarm setup

System configuration

PROCESS SETTINGS | CYCLE SETTINGS | AUX SETTINGS

EDIT CYCLES | IMPORT EXPORT CYCLES | ADVANCED

Remote Access

Main features

	KTD410	KTD710	KTD820
DISPLAY	4.3" 16/9 TFT 480 x 372	7" 16/9 TFT 800 x 480	12" 16/9 TFT 1280 x 800
POWER SUPPLY	24 V DC	24 V DC	24 V DC
PROGRAMMABLE ANALOGUE INPUTS	2	2..8	2..8
DIGITAL INPUT	4	8..16	8..16
RELAY OUTPUTS	-	8..16	8..16
SSR CONTROL OUTPUT	8	2..4	2..4
ANALOGUE OUTPUTS (mA/Volt)	2	2..4	2..4
ETHERNET / MODBUS TCP	●	●	●

Software features

PID / AUTOTUNING	●	●	●
OPEN / CLOSE LOGIC (valves)	●	●	●
CYCLE RECOVERY	●	●	●
WAITING FUNCTION	●	●	●
DELAYED START	●	●	●
GAS KILN OPTIONS	●	●	●
MULTILOOP APPLICATIONS	●	●	●
CYCLES / PROGRAMS	99	99	99
STEPS / SEGMENTS	20	45	45
MEMORY CARD	●	●	●
REMOTE CONTROL (VNC)	●	●	●
ADDITIONAL ZONES	○	●	●

ORDERING CODES

KTD410-EK2	KIT HMI 4.3" - ELECTRIC KILNS 2 ZONES - 4 DI + 8 DO (TD410-AD / MCM260X-9AD)
KTD710-EK2	KIT HMI 7" - ELECTRIC KILNS 2 ZONES - 8 DI + 8 AUX (TD710-AD / 2x DRR460 / MCM260X-4AD)
KTD820-EK2	KIT HMI 12" - ELECTRIC KILNS 2 ZONES - 8 DI + 8 AUX (TD820-AD / 2x DRR460 / MCM260X-4AD)
KTD710-GK2	KIT HMI 7" - GAS KILNS 2 ZONE - 8 DI + 8 AUX (TD710-AD / 2x DRR460 / MCM260X-4AD)
KTD820-GK2	KIT HMI 12" - GAS KILNS 2 ZONE - 8 DI + 8 AUX (TD820-AD / 2x DRR460 / MCM260X-4AD)
DRR460-12A-T128	Additional zones 3..8 (1 DRR460 = 1 zone)
MCM260X-4AD	Additional Inputs / AUX 9..16
2000.34.032	Option 3PH Energy Meter